



 **ADFAST**

INDUSTRIAL MANUAL

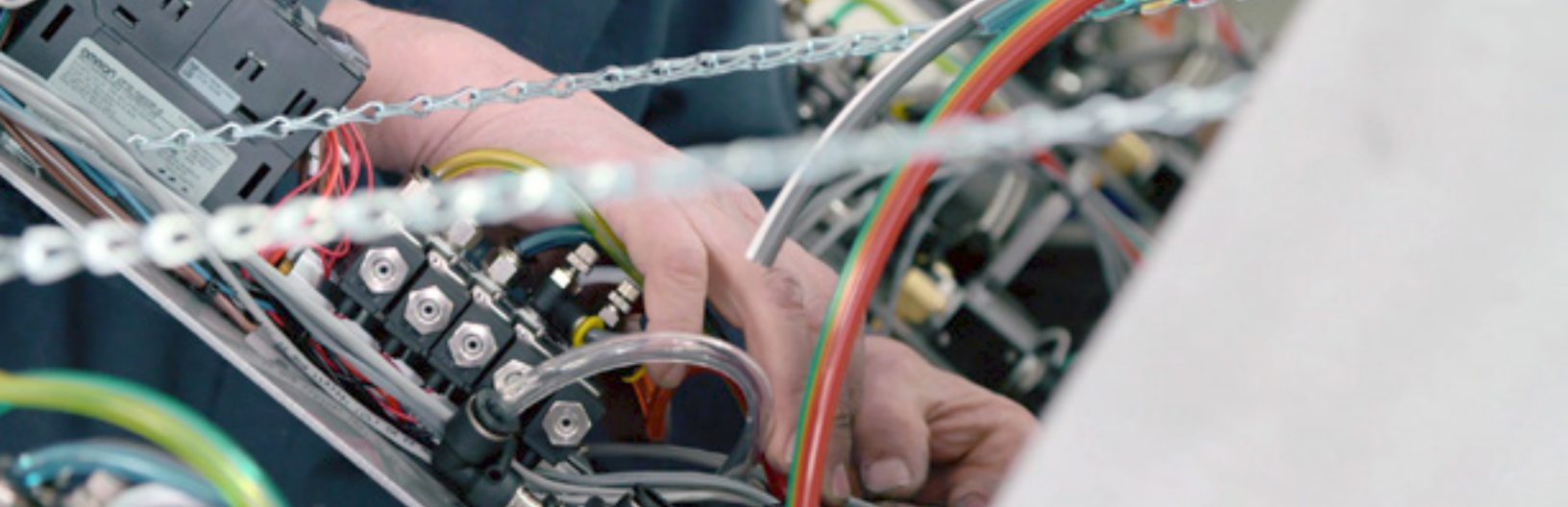


INTRODUCTION

For more than 30 years, Adfast has been manufacturing high-quality adhesives, sealants and protective coatings for various manufacturing sectors, known as Adseal, Adbond, Adthane, Adcoat, Adshield, Adspray, Adsil, Thermobond and Adfoam. Our products meet the most stringent performance requirements. Adfast is concerned about the environment and the health of its users, and focuses on products that are the least toxic possible and contain the lowest VOC levels possible, according to industry standards. Many of our products have UL / Ecologo certification (UL2761 and UL2762). With an experienced technical team and a state-of-the-art laboratory, Adfast will be able to respond effectively to the requirements of the manufacturing world. With offices and warehouses throughout North America, we can respond to your requests in a very short time.

This manual is a reference tool to help you select the product (s) that will help you optimize your production and surpass your competition. Adfast does not just provide you with quality products but will also accompany you in the implementation of your projects, production line and equipment. Adfast wants to be more than your supplier, we are a partner in your success. Adfast has established business relationships with globally recognized companies for more than 30 years.

Our mission is to provide environmentally friendly products, participate in sustainable development with high quality products and offer unrivaled technical support to our partners.



RESEARCH AND DEVELOPMENT

Adfast is investing a lot of time and money in the development of new products that are more environmentally and user-friendly.

Our team of chemists and chemical engineers is working tirelessly to develop new products to reduce the ecological footprint on the environment. In order to protect the health of our employees and increase our efficiency, we regularly review all of our production processes.

For the development of new products we possess laboratory equipment for low scale production which allow us to eliminate a lot of waste. Once the new product is produced in the laboratory, we can transfer it to production on a larger scale.

Adfast has the equipment to carry out tests according to American Standards ASTM necessary for writing the most complete data sheets possible.

QUALITY ASSURANCE

At Adfast the quality of our products is paramount. Our quality management system adopts an ISO 9001 certified process improvement approach. Our quality policy is to identify and exceed our customers' expectations by providing them with the best assembly technologies and uncompromising technical support . Thanks to the involvement of all our employees, our continuous improvement program allows us to be a better supplier for our customers, more profitable for our shareholders and a better employer.

Each produced batch is kept in quarantine in order to carry out the necessary quality tests before releasing the products.

MANUFACTURING PROCESSES

The production of our sealants, adhesives and polyurethane foams is done in batches with a completely automated process. This process ensures reliability in the quality of the products. The raw materials are on scales and pumped directly into mixing vessels. Subsequently automated packaging takes place in the different formats required.

Adfast possesses the equipment for production on both large scale and small. This small scale production allows us to offer custom colors in addition to our wide range of color options, produced in a very short time.

TECHNICAL SUPPORT

With a team of experienced technical representatives, we will be able to support you from the beginning to the end of your projects. Whether for laboratory testing, production line upgrading, optimization of an existing line, production problem solving or procurement of equipment, the Adfast team will know how to attend to your needs.

OUR TRADEMARKS



AD SEAL

Complete range of sealants / adhesives including silicone, hybrid and acrylic latex. Very good adhesion on painted or unpainted metals, glass, certain plastics and masonry. This range also includes primers, cleaning products, sealant materials and seat padding.

AD BOND

Complete range of water based, solvent based or 100% solid adhesives. Several viscosities and setting speeds available. Used for bonding wood, metals, some plastics and paper / cardboard.

AD THANE

Complete range of sealants / adhesives. Use in sealing or bonding applications. Available in black, gray and white. Special colors available upon request. Primarily used in the transportation industry.

AD COAT

Complete range of protective coatings for woods, metals and some plastics.

AD SHIELD

Complete range of air and vapor barrier membranes. Very good adhesion on most building materials.

AD SOLVE

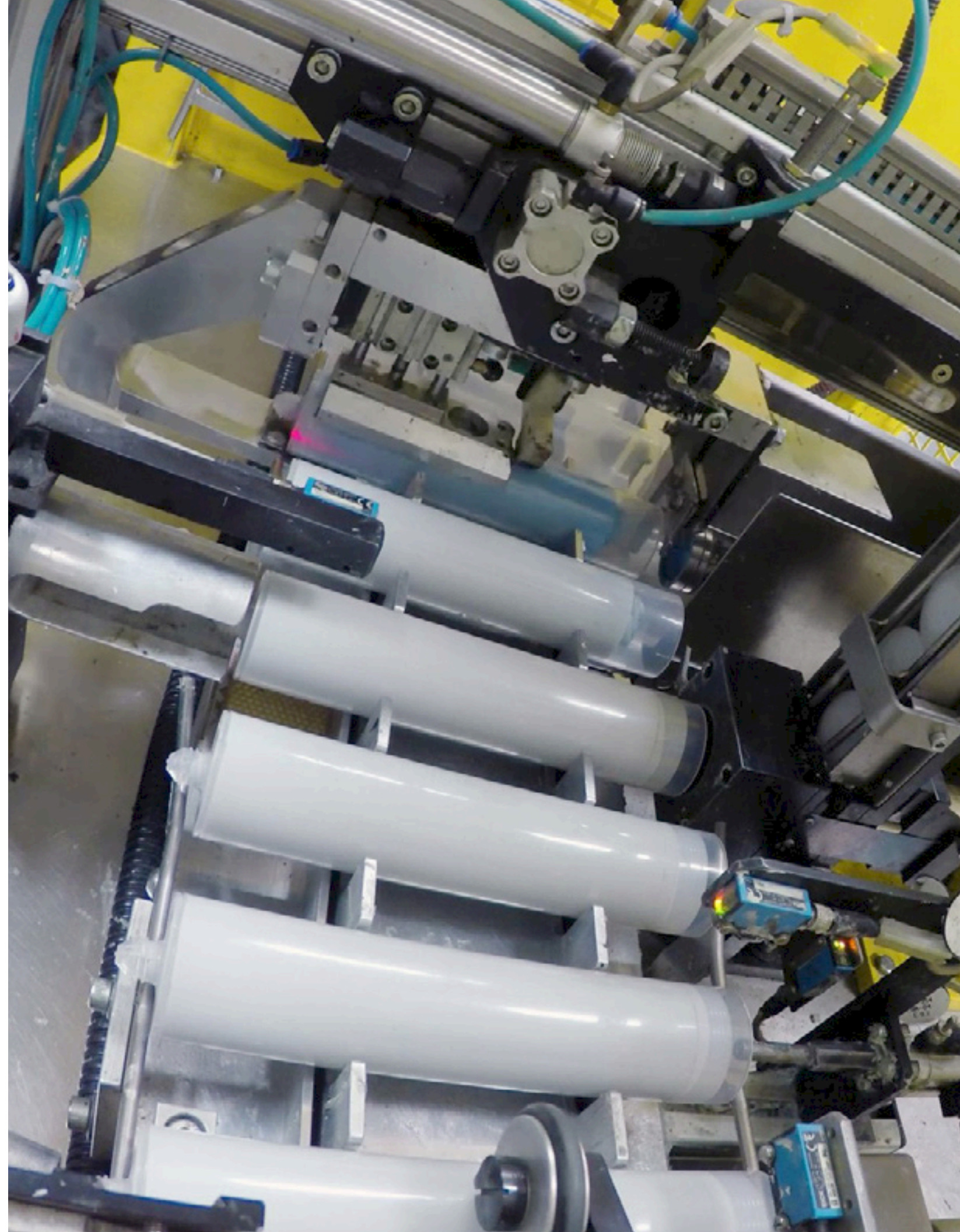
Complete range of cleaning solvents

AD FOAM

Range of polyurethane foams for gluing or insulation. Very good adhesion on wood, metals, some plastics or masonry.

THERMOBOND

Complete hot glue range including EVA, APAO as well as pressure sensitive adhesives. Very good adhesion on wood, metals, some plastics and paper / cardboard.



OUR MARKETS



CONSTRUCTION MATERIALS

- Doors and commercial or residential windows
- Garage doors
- Industrial doors
- Prefabricated houses
- Granite counters

WOODWORKING

- Furniture
- Cabinets
- Mattresses
- Stairs
- Finger Jointing

HVAC (HEATING, VENTILATION, AIR CONDITIONING)

- Cabinets
- Internal components
- Air exchangers

ENERGY

- Wind turbines
- Solar panels

APPLIANCES

- Ranges
- Refrigerators
- Washers
- Dryers
- Dishwashers
- Sweepers

FILTERS

FOOD INDUSTRY

- Refrigerators
- Refrigerated counters
- Ranges
- Wine coolers
- Cold rooms

LAMINATION

- Sandwich panels
- Insulating Panels (by steam / by air)
- Posters (Paper / Cardboard)
- Display stands
- Fabrics

AGRICULTURAL AND CONSTRUCTION MACHINERY

- Vehicles
- Silos
- Mixers
- Automatic feeding system

PACKAGING

- Boxes
- Transport containers

TRANSPORTATION

- Recreational vehicles
- Trailers
- Box Truck
- Specialized vehicles (Ambulance, fire engine, road safety, hydro, Bell, etc.)
- Buses
- Trains
- Automobiles
- Boats
- Aviation

CONSTRUCTION MATERIALS



DOORS AND WINDOWS

Adseal Production Series 4550

- Application: Rebate joints, module assemblies, sealing of different components

Adseal PFR 4580 Series

- Application: Rebate joints, module assemblies, sealing of different components

Adseal FC 4570 Series

- Application: Primary sealant for glass in wooden, aluminum or pvc window frames. Rebound joints. All horizontal applications requiring rapid initial setting

Adseal FC 4570SL Series

- Application: Aluminum window corner sealing

Adseal PFR Paintable Series 1940

- Application: Sealing of various components needing to be painted

Adseal Primer MK60095

- Application: Surface finish that are more difficult to adhere. Can be used with Adseal Silicone and Hybrid Sealants

Adfoam 1885-2

- Application: Insulation of different components

Thermobond JPS70300

- Application: Protective corner bonding on cardboard or expanded polystyrene. Pvc blowing bonding

Adbond 5542

- Application: Bonding of steel reinforcement in the framework of pvc

Adbond 5022-1

- Application: Gluing of rubber seal. Average setting speed and average viscosity

Adbond 5014S

- Application: Gluing of rubber seal. Quick setting and low viscosity

Adbond 8388-1

- Application: Laminate tablet gluing on projecting windows

Adseal Cleaner 6003

- Application: Multi-purpose surface preparation cleaner

Adsolv DP60011

- Application: Product used for pvc curvature

PUD paint for PVC

- High strength water based paint

GARAGE DOORS

PUR Hot Melt 7431

- Application: Lamination of rigid insulation and steel or aluminum

Adseal 4540 Series

- Application: Gluing of internal steel reinforcements

Thermobond JPS70300

- Application: Gluing of internal steel reinforcements

Adseal Cleaner 6003

- Application: Multi-purpose surface preparation cleaner

INDUSTRIAL DOORS

Adbond 5645 Series

- Application: Gluing of honeycombs, rigid insulation, particle board on steel

Adbond 5542

- Application: Bonding of key or applied paths

Adbond 5692 or 1712HV

- Application: Bonding of key or applied paths

Thermobond JPS70300

- Application: Gluing of internal steel reinforcements

Adsolv 6040

- Application: Polyurethane adhesive cleaner

Adseal Cleaner 6003

- Application: Multi-purpose surface preparation cleaner

PREFABRICATED HOUSES

Adseal PFR 4580 Series

- Application: Expansion joints or sealing for doors, windows, covering, roofing and exit of household equipment (including range hoods, dryer outlets, ventilation, etc.)

Adseal PFR Paintable 1940 Series

- Application: Expansion joints or sealing for doors, windows, covering, roofing and exit of household equipment (including range hoods, dryer outlets, ventilation, etc.) needing to be painted

Adfoam 1885-2

- Application: Insulation of doors and windows and other cavities

Adseal CSB 4800 Series

- Sealing of kitchen and bathroom countertops, showers, washbasins and toilets

Adseal Primer MK60095

- Application: Surface finishes that are more difficult to adhere. Can be used with Adseal Silicone and Hybrid Sealants

Adbond 3055

- Application: Sub-floor bonding (plywood on structure)

Adfoam Bond 1850

- Application: Sub-floor bonding (plywood on structure)

Adbond 1712HV

- Application: Sub-floor bonding (plywood on structure)

Adseal PFM 1090 Series

- Application: Interior sealing of doors, windows and molding needing to be painted

Adseal BF 1072

- Application: Molding interior seal that needs to be sanded and painted

GRANITE COUNTERS

Adseal Industrial 461-01

- Application: Gluing of recessed sinks

WOODWORKING



FURNITURE / CUPBOARDS

Adbond 3055LV

- Hot press
- Assembly
- Solid panel

Adbond 1712HV

- Construction glue

Adbond 3055

- Assembly

Adbond 3055HV

- Assembly

Adbond 3063-1

- Hot press
- Assembly

Adbond 3023A-1

- Hot press
- Membrane press
- Vacuum press
- Assembly
- Solid panel (exotic wood)

Adbond 3023CB-1

- Catalyst for 3023A-1

Thermobond 7104

- Countertop backrest
- Reinforcement of underside of drawers
- Reinforcement of caissons

Thermobond 7310

- Countertop backrest
- Reinforcement of underside of drawers
- Reinforcement of caissons

Adbond 8388-1

- Bonding of laminates

Adbond EP80105

- Bonding of laminates

Adbond 8916

- Foaming foam bonding

Adsil Spray 4000A2

- Lubricant

Adcoat Lacquer

- Wood varnish

Adbond 5023HV-1

- Mdf molding bonding

Adbond 5014S

- Solid wood molding

Adbond 5051

- Accelerator for 5014S and 5023HV

Adsolv 6002

- Cleaning solvent for contact adhesive Adbond 8388-1 and EP80105

MATTRESSES

Thermobond GR70174

- Bonding of polyurethane foam, latex or other

Thermobond AL70264

- Bonded spring bonding

Adbond 8916

- Bonding of polyurethane foam, latex or other

Adsil Spray 4000A2

- Lubricant

STAIRCASES

Adbond 3023A

- Solid panel bonding

Adbond 3055LV

- Solid panel bonding

Adbond 1712HV

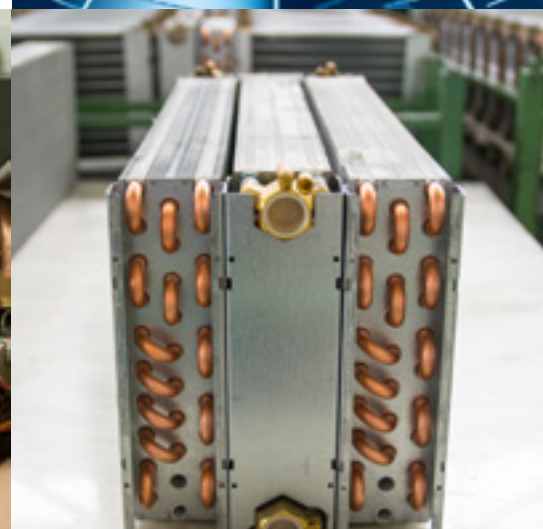
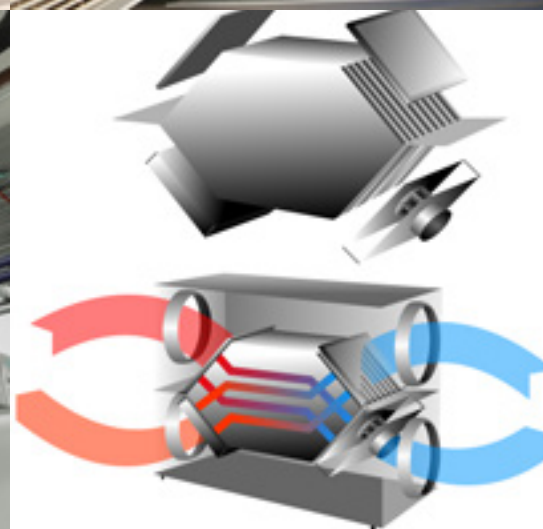
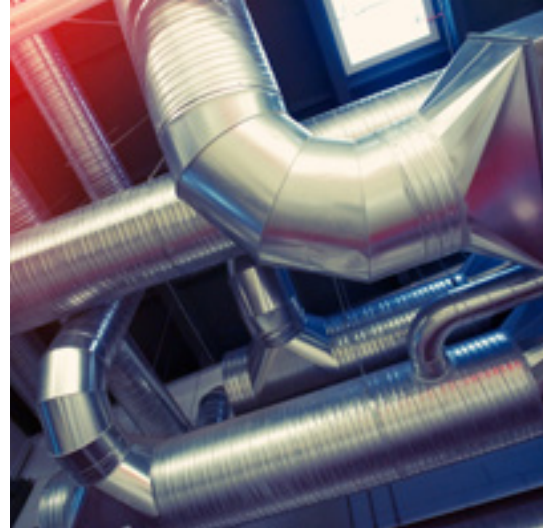
- Gluing of step and counter-step on the strands

FINGER JOINTING

Adbond 3022-2LV

- Pine finger jointing

HVAC



CABINETS

Adseal PFR 4580 Series

- Waterproof (cannot be painted)

Adthane 1800 Series

- Waterproofing inside and outside (can be painted)

Adseal 4706-3

- Waterproofness requiring higher heat resistance (cannot be painted)

Adseal PFRP 1940 Series

- Indoor and outdoor sealing

Adshield Polyurea (floor)

- Floor and roof membranes

INTERNAL COMPONENTS

Adseal 4560V

- Waterproofing of thermogains
- Sealing of air exchanger cores

Adseal PFRP 1940 Series

- Thermal wheel sealing

Adshield PAS-5184, PAS-5185 and PAS-5179

- Sealing of air exchanger cores

Adsolv 6034*

- Solvent cleaner

Adsold 6018

- Solvent cleaner

Adseal 4000-100-10

- Lubricant

Adsil Spray 4000A2

- Aerosol lubricant

AIR EXCHANGERS

Adseal 4560V

- Waterproofing of the various internal components (UL94HB)

ENERGY



WIND TURBINES

Epoxy 5300 A/B

- Strengthening the blades

Adseal Production 4550 Series

- Sealing
- Anti-corrosive coatings

SOLAR

Adseal Structural 4940 Series

- Sealing

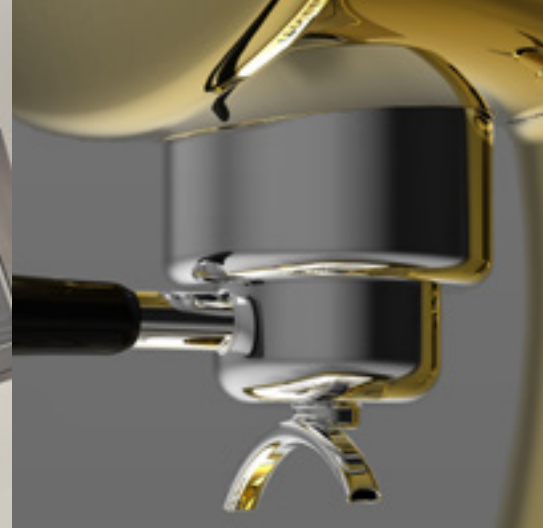
Adseal PFRP 1940 Series

- Sealing

Adbond 1500 Series

- Bonding and sealing

APPLIANCES



RANGES

Adseal Production 4550 Series

- Waterproofing and gluing

Adseal HT 4706-3

- High temperature sealing

REFRIGERATORS

Adseal Production 4550 Series

- Waterproofing and gluing
- Protective coating

Adbond 5014S

- Sealing gluing

WASHERS

Adseal Production 4550 Series

- Sealing
- Protective coating

Adbond 5014S

- Sealing gluing

DRYERS

Adseal Production 4550 Series

- Sealing
- Protective coating

Adbond 5014S

- Sealing gluing

DISHWASHERS

Adseal Production 4550 Series

- Sealing
- Protective coating

Adbond 5014S

- Sealing gluing

SWEEPERS

Adseal Production 4550 Series

- Sealing
- Protective coating

Adbond 5014S

- Sealing gluing

RANGE HOODS

Adseal 4560V

- Sealing

FOOD INDUSTRY



REFRIGERATOR

Adseal Production 4550 Series

- Sealing

Adbond 5014S

- Seal gluing and sealing

REFRIGERATED COUNTERS

Adseal Production 4550 Series

- Sealing

Adseal PFRP 1940 Series

- Sealing

Adseal KB 4800 Series

- Sealing

Adthane 1800 Series

- Sealing

Adbond 8388-1

- Primer for injection of polyurethane foam

Thermobond JPS70300

- Primer for injection of polyurethane foam

Adfoam Bond 1850

- Bonding of expanded polystyrene insulation

Adbond 1712HV

- Reinforcement bonding

Adseal Cleaner 6003

- Cleaner for surface preparation

RANGES

Adseal Production 4550 Series

- Waterproofing and gluing

WINE COOLERS

Thermobond JPS70300

- Bonding of rigid insulation

Adseal Production 4550 Series

- Sealing

COLD ROOMS

Adseal Production 4550 Series

- Bonding of some components

Adseal KB 4800 Series

- Sealing

Thermobond 7141-1

- Internal reinforcement gluing of panels

Thermobond JPPS70300

- Internal reinforcement gluing of panels

Adseal 4000-100-10

- Anti-stick agent

AGRICULTURAL AND CONSTRUCTION MACHINERY



VEHICLES

Adseal Transport 4530 Series

- Sealing

Adbond 8916

- Seat (padding)

Thermobond JPS70154

- Seat (padding)
- Inside trim
- Protective coatings
- Underbody protection
- Noise reduction

SILOS

Adseal PFR 4580 Series

- Sealing

Adseal 4563

- Sealing

SEALERS, MIXERS, AUTOMATIC FEEDING SYSTEM AND SPREADERS

Adseal Adseal Transport 4530 Series

- Sealing

TRANSPORTATION



RECREATIONAL VEHICLES

PUR Hot Melt (grade to be determined)

- Lamination of sandwich panels

Adbond 5645 Series

- Lamination of sandwich panels

Adseal Transport 4530 Series

- Waterproof (cannot be painted)
- Bonding of certain components

Adbond 1712HV

- Adhesive for some components

Adbond MK80130P

- Bonding of fiberglass insulation
- Carpet Collage

Adbond BG80107

- Bonding of sandwich panels

Adbond 8916C

- Gluing of foam padding (furniture)

Adbond 3063-1

- Wood furniture components

Adbond 5014S

- Gluing of trim, molding and gaskets

Adseal KB 4800 Series

- Silicone sealer for sinks, showers, toilets

Adfoam 1885-2BLK

- Insulation around hoses or other openings

Adthane 1800 Series

- External sealing

Thermobond MK70290

- Carpet gluing
- Doors

Thermobond JPS70154

- Carpet gluing
- Bonding of cushioning foam

Adseal Cleaner 6003

- Cleaner for surface preparation
- Undercoating (grade to be determined)
- Underbody protection
- Noise Reduction

TRAILERS

Adseal Structural 4948HV

- Aluminum bonding on galvanized steel structures

Hybrid 2K

- Bonding of metallic panels on the structures

Adseal Transport 4530 Series

- Waterproof (cannot be painted)
- Bonding of certain components

Adbond 1712HV

- Bonding of interior wood components

Adbond 5645 Series

- Insulated doors

Adbond 1500 Series

- Sealing between walls and structures

Adseal Cleaner 6003

- Cleaning Cleaner for surface preparation
- Undercoating (grade to be determined)
- Underbody protection

BOX TRUCKS

Adthane 1800 Series

- Sealing (can be painted)
- Roof gluing

Adseal Transport 4530 Series

- Sealing (cannot be painted)

PUR Hot Melt (hardwood floors) grade to be determined

- Hardwood floor

Adseal Cleaner 6003

- Cleaner for surface preparation
- Undercoating (grade to be determined)
- Underbody protection
- Noise reduction

SPECIALIZED VEHICLES (AMBULANCE, FIRE ENGINE, ROAD SAFETY, SHIELDED, ETC.)

Hybrid 2K

- Bonding of metallic panels on the structures

Adbond 1500 Series

- Bonding or sealing inside and outside (can be painted)

Adseal Transport 4530 Series

- Sealing (cannot be painted)

Adthane 1800 Series

- Sealing (can be painted)

Adbond 5014S

- Gluing of trim, molding and gaskets

Adbond 8388-1

- Gluing of fabrics on metals (interior doors)
- Interior furniture
- Flooring

Adbond JPS30270

- Flooring

Adseal Cleaner 6003

- Cleaner for surface preparation
- Undercoating (grade to be determined)
- Underbody protection
- Noise reduction

BUSES

Hybrid 2K

- Bonding of metal panels on structures

Adbond 5531

- Bonding of metal panels on structures

Adbond 1500 Series

- Honeycomb flooring

Adseal Transport 4530 Series

- Sealing (cannot be painted)

Adthane 1800 Series

- Sealing (can be painted)

Adbond 8388-1

- Gluing of fabrics on metals (interior door)

- Interior furniture

Adbond 5014S

- Gluing of trim, molding and gaskets

Adbond JPS30270

- Flooring

Adseal Cleaner 6003

- Cleaner for surface preparation
- Underbody protection
- Noise reduction

AUTOMOBILES

Adbond 1500 Series

- Sealing (can be painted)

Adthane 1800 Series

- Sealing (can be painted)

Hybrid 2K

- Bonding of panels on structures

Adbond 5531

- Bonding of panels on structures

Thermobond JPS70154

- Gluing of carpets or fabrics

Adseal Cleaner 6003

- Cleaner for surface preparation
- Underbody protection
- Noise reduction

BOATS

Adseal Transport 4530 Series

- Sealing at the top of the waterline (cannot be painted)

Adthane 1800 Series

- Sealing at the top of the waterline

Hybrid 2K

- Bonding of structural components

Adseal Cleaner 6003

- Cleaner for surface preparation

Adbond 8388-1

- Bonding of interior furniture components

Adbond 8916

- Gluing of foam padding (furniture)

AVIATION

Adseal Transport Series 4530

- Sealing of different components

Adseal Cleaner 6003

- Cleaner for surface preparation

Adbond 8388-1

- Bonding of fabrics



HEAD OFFICE, LABORATORY AND PRODUCTION

2685, rue Diab, St-Laurent, H4S1G1
514-337-7307
Order : servicemtl@adfastcorp.com

OFFICE AND WAREHOUSE (CANADA)

Quebec
1400. boul. St-Jean-Baptiste, G2E 5B7
418-877-3300
Order : serviceqc@adfastcorp.com

Toronto
2696 Slough St, Mississauga, L4T 1G3
905-405-9346
Order : serviceto@adfastcorp.com

Winnipeg
1635, Burrows Avenue, Unit 16, Winnipeg, R2X 3B5
204 582-0480
Order : servicemb@adfastcorp.com

Calgary
4216, 54th Avenue SE, Unit 17, Calgary, T2C 2E3
403 236-2446
Order : serviceal@adfastcorp.com

Vancouver
604 207-9699
Order : servicebc@adfastcorp.com

OFFICE AND WAREHOUSE (UNITED STATES)

Missouri
12840 Penridge Dr, Bridgeton, 63044
314 209-0075
Order : servicemo@adfastcorp.com

Florida
11828 Miramar Pkwy, Miramar, 33025-7002
954 392-7050
Order : servicefl@adfastcorp.com

Indiana
3418, County Rd 6E, Unit 3, Elkart, 46514
574 262-2336
Order : servicein@adfastcorp.com





www.adfastcorp.com