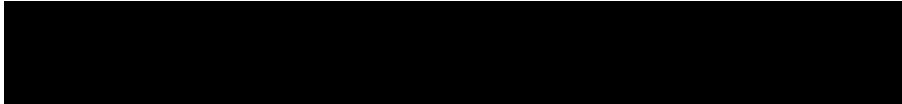


The logo icon consists of five black squares arranged in a staggered, grid-like pattern.

# ADFAST

**CONSTRUCTION**





An aerial photograph of a demolition site, showing a large building being dismantled. A yellow excavator is visible at the top, and a yellow loader is at the bottom. The scene is filled with debris, including wooden planks, metal scraps, and a large pile of dirt. A large, semi-transparent 'X' is overlaid on the image, and the word 'SEALANTS' is written in bold, black, sans-serif capital letters in the center.

# SEALANTS



# ADSEAL DWS 4580

WEATHERSEAL NEUTRAL CURE SILICONE

300+ COLORS AVAILABLE  
MATCHES 1200+ PAINT & SIDING COLORS



NEUTRAL

4581 TRANSLUCENT	4582 4602 WHITE	4585 4605 GLACIER WHITE	458-92 460-92 PURE WHITE	458-29 460-29 VANILLA	458-11 460-11 ALMOND	458-28 460-28 ANTIQUÉ IVORY
4584 4604 IVORY	458-35 460-35 MAIZE	458-80 460-80 DUNE	458-12 460-12 LAMBETH BEIGE	458-34 460-34 CASHMERE	458-62 460-62 WICKER	458-53 460-53 CREAM XL

BROWN

458-13 460-13 SANDLEWOOD	458-15 460-15 ROYAL SANDLEWOOD	458-83 460-83 SOFT BEIGE	458-32 460-32 CHAMPAGNE	458-41 460-41 TAN	458-33 460-33 BROWNSTONE	458-17 460-17 PEBBLE KHAKI
458-95 460-95 SAHARA G	458-46 460-46 STONE	458-56 460-56 PECAN	458-16 460-16 KHAKI	458-66 460-66 ACADIA XL	458-26 460-26 LIGHT BRONZE	458-79 460-79 PRESTIGE GOLD
458-77 460-77 DRIFTWOOD	458-27 460-27 BROWN	458-23 460-23 RENAISSANCE BRONZE	458-37 460-37 WALNUT	458-43 460-43 DARK WALNUT	458-24 460-24 WIND SAND	458-21 460-21 CHARCOAL

WARM

458-63 460-63 SIERRA WOOD XL	458-70 460-70 CONTEMPORARY BROWN	458-99 460-99 RED FOX	458-19 460-19 CHOCOLATE BROWN	458-81 460-81 ESPRESSO	4587 4607 WINDOW BRONZE	458-47 460-47 BRONZE
458-68 460-68 FALL AMBER XL	458-61 460-61 ORANGE	458-71 460-71 CARAMEL	458-14 460-14 YELLOWSTONE	458-73 460-73 IPE	458-88 460-88 MUSKOKA	458-57 460-57 CEDAR
458-82 460-82 ROASTED	4586 4606 DARK RED	458-54 460-54 CRANBERRY	458-36 460-36 REDWOOD	458-58 460-58 BRICK RED	458-52 460-52 BURGUNDY	458-91 460-91 BRIGHT RED

COLD

458-45 460-45 BONE WHITE	4588 4608 ANODIZED ALU	4589 4609 ALUMINUM	458-67 460-67 REGENT GREY	458-39 460-39 DARK ALUMINUM	458-38 460-38 GALVANIZED ALU	458-20 460-20 LIGHT GREY
458-119 460-119 TIMBERWOLF	458-97 460-97 KYNAR GREY	458-44 460-44 CLOUDY GREY	458-48 460-48 CEMENT GREY	458-22 460-22 SLATE GREY	458-75 460-75 IRON ORE	458-84 460-84 OLD CASTLE BRONZE

METALLIC

4583 4603 BLACK	458-30 460-30 WEDGWOOD BLUE	458-42 460-42 IVY GREEN	458-51 460-51 HERON BLUE	458-55 460-55 MIDNIGHT BLUE	458-49 460-49 FOREST GREEN	458-59 460-59 CACTUS GREEN
458-601 CLEAR GLASS II	458-602 PEWTER	458-604 BRIGHT SILVER	458-605 PEARL CHARCOAL	458-608 ANODIZED ALU	458-632 CHAMPAGNE	458-657 COPPER

- 304ml cartridge, 400ml or 600ml sausage
- Ideal for movement and perimeter joints
- Meets ASTM C920, S, NS, Class 50, NT, M, GA, O
- Meets AAMA 802 and 805 standards
- Can be used on aluminum, glass, masonry, some plastics, painted and unpainted metals
- Ideal for two-sided structural
- Compatible with sealed units
- Indoor and outdoor use
- Excellent resistance to UVs
- Non-corrosive
- Low VOC
- Cannot be painted

*\*This document is for reference only and should not be used as a color matching tool. Please contact your local representative to obtain a sample color chart.*





# ADSEAL LM 4600

WEATHERSEAL NEUTRAL CURE SILICONE



## 300+ COLORS AVAILABLE MATCHES 1200+ PAINT & SIDING COLORS

- 304ml cartridge, 400ml or 600ml sausage
- Expansion joint sealant
- Meets ASTM C920, S, NS, Class 100/50, NT, M, G A, O, ASTM C1382 (**EIFS**) Exterior Insulation and Finish Systems
- Excellent adhesion to masonry, anodized aluminum, painted metals, some plastics and glass
- Indoor and outdoor use
- Excellent resistance to UVs
- Non-corrosive
- Low VOC
- Cannot be painted



# ADSEAL PRODUCTION 4550

## NEUTRAL CURE SILICONE ADHESIVE SEALANT



- 304ml cartridge, 400ml or 600ml sausage  
Meets ASTM C920, S, NS, Class 50, NT, M, G, A, O
- Meets AAMA 802, 803 and 805 standards
- Meets ASTM E84 (4559) FSI: 0 / SDI: 20
- Excellent adhesion to doors, windows, curtain wall assembly, cold rooms, clean rooms, laboratories, ventilation, and mirrors
- Indoor and outdoor use
- Excellent resistance to UVs
- Non-corrosive
- Low VOC



# ADSEAL STRUCTURAL 4940

## STRUCTURAL NEUTRAL CURE SILICONE ADHESIVE SEALANT



- Ideal for the manufacturing of two and four-sided curtain walls and architectural panels
- Meets ASTM C920, S, NS, Class 50, NT, G, A, O
- Excellent adhesion to anodized aluminum and glass
- Indoor and outdoor use
- Excellent resistance to UVs
- Non-corrosive
- Low VOC



# ADSEAL DWSP 1940

## WEATHERSEAL HYBRID ADHESIVE SEALANT

- Paintable
- Excellent adhesion to several types of siding
- Meets ASTM C920, S, NS, class 50, NT, M, G, A, O
- Very good elongation
- Ease of application in cold weather
- Solvent-free
- Isocyanate-free
- Phthalate-free
- Low VOC
- Good resistance to UVs
- Outdoor use
- Large choice of colors



1941 Ultra Clear	1942 White	1943 Black	1945 Glacier White	1949 Gray	194-13 Sand	194-14 Yellowstone
194-15 Barista	194-16 Khaki	194-17 Cliffside	194-18 Sandalwood	194-19 Coastline	194-20 Red Fox	194-22 Granite
194-23 Timber Bark	194-24 Taupe M	194-25 Navajo Beige	194-26 Chestnut Brown	194-27 Cobble Stone	194-28 Rustic Brown	194-29 Aged Pewter
194-30 Scotia Blue	194-31 Night Gray	194-32 Muskoka	194-33 Charcoal	194-34 Translucent	194-36 Barn Wood	194-37 Walnut
194-38 Gray Wolf	194-39 Dark Aluminum	194-46 River Rock	194-47 Commercial Brown	194-52 Country Red	194-55 Midnight Blue	194-57 Cedar
194-63 Sierra	194-66 Acadia	194-88 Mist Gray				



## ADSEAL KB 4800

### MILDEW RESISTANT ACETOXY SILICONE ADHESIVE SEALANT

- Anti-mold
- Excellent adhesion to several materials
- Kitchen and bathroom
- Glass partitions
- Does not yellow
- Excellent resistance to UVs
- Indoor and outdoor use
- Low VOC



## ADSEAL GT 1600

### HYBRID GUTTER SEALANT

- Adheres to most gutters
- Can be applied to wet surfaces
- Excellent resistance to UVs
- Solvent-free
- Isocyanate-free
- Phthalate-free
- Low VOC





## ADSEAL DWMS 1090 SILICONIZED LATEX SEALANT



- Can be painted
- Meets ASTM C834 standard
- Flexible (siliconized)
- Adhesion to gypsum, wood, laminated countertops, ceramic, mouldings, doors and windows
- Indoor application only

## ADSEAL CF 1070 CRACK FILLER LATEX ACRYLIC SEALANT



- Can be painted
- Can be sandblasted
- Adhesion to gypsum, wood, laminated countertops, ceramics
- Indoor application only





## **ADSEAL HIGH TEMPERATURE 4706-3**

### **HIGH TEMPERATURE ACETOXY SILICONE ADHESIVE SEALANT**

- Resistant to high temperatures
- Permanent 260°C (500°F) / Intermittent 315°C (600°F)
- Meets ASTM C920, S, NS standard
- Sealing of chimneys and fireplaces
- Excellent resistance to UVs
- Indoor and outdoor use
- Low VOC



## ADSEAL CLEANER 6003

Multi-purpose cleaner, 10L or 470mL format



## WIPE CLOTHS

Dry cloths to remove uncured adhesive on tools & surfaces



## ADSEAL WET WIPES

Cleaning wipes to remove uncured adhesive on tools & surfaces



## MK60095

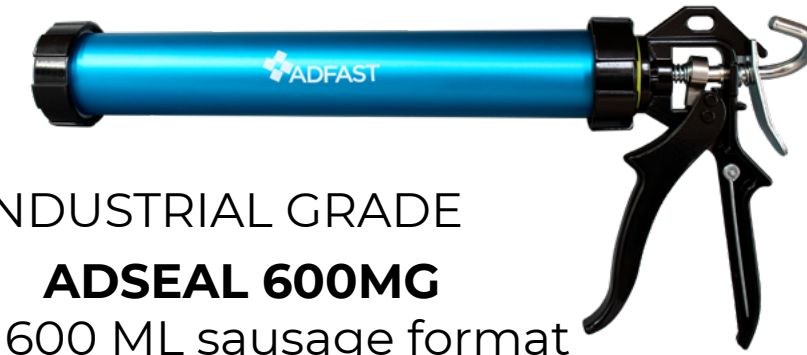
Brush primer for difficult to adhere surfaces





# ACCESSORIES

## CAULKING GUNS



INDUSTRIAL GRADE  
**ADSEAL 600MG**  
For 600 ML sausage format  
**ADSEAL 400MG**  
For 400ML sausage format



PROFESSIONAL SERIES  
**COX 51001-M-H**



PROFESSIONAL SERIES  
**COX 41004**



CONTRACTOR GRADE  
**AP 2002**



PROFESSIONAL SERIES  
**COX 61001**  
For 304ML cartridge format  
**COX 61006-10**  
For 400ML sausage format  
**COX 61006-20**  
For 600ML sausage format



# ACCESSORIES

## CAULKING GUN NOZZLES



**2N1006**

Caulking gun sausage cone



**2N1007**

Caulking gun sausage cone



**935-4**

Caulking gun sausage cone, 45°



**Blue Nozzle**

Caulking gun sausage cone, 45°



**D04**

Spare nozzle for cartridges,  
Length of 7 in.



**360 NOZZLE**

Spare nozzle for cartridges,  
360°



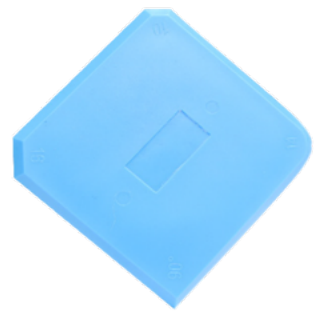
**BJ NOZZLE**

Spare nozzle for cartridges,  
45°-90° adjustable nozzle kit



# ACCESSORIES

## SHAPING TOOLS FOR SEALANT JOINTS



### BLUE SHAPING TOOL

- For small jobs, 4 angles of shaping



### TOOLING KIT

- For larger jobs, set of 7 wooden sticks, various widths for multiple angles of shaping



# ACCESSORIES

## BACKER RODS AND SETTING BLOCKS



### BACKER RODS

- Soft bi-cellular backer rods of various dimensions



### SETTING BLOCKS

- Setting blocks for sealed units, different dimensions, with or without drainage groove





# ONLINE TOOLS

## PRODUCTS

FIND THE PERFECT PRODUCT FOR YOUR PROJECT

## COLORS

FIND THE PERFECT MATCH FOR YOUR PROJECT

## CALCULATOR

FIND THE RIGHT SEALANT QUANTITY





# FOAMS





AVOID AIR DRAFTS!

## 1875

- Insulation of doors and windows
- Applicable in temperatures as low as -5°C (41°F)
- Meets CAN / ULC S102 and ASTM E84 standards
- 70% to 80% of closed cells
- Gun grade





# AD FOAM POLAR

INSULATE YOUR DOORS AND WINDOWS DURING HARSH WINTERS



## 1825

- Applicable in temperatures as low as -25°C (-13°F)
- High density foam for better insulation and soundproofing
- High pressure can ensures 100% of the foam is expelled and used

[MORE ABOUT PRODUCT](#)





**SEE PRODUCT VIDEO**



**INSULATE WITH GREATER FLEXIBILITY**



## 1865

- Minimal expansion foam for doors, windows and curtain walls
- Elongation at break: 36% – 38%
- Very low V.O.C.: 2 g / L
- Compression strength: 9.4 psi (10%)
- Tack free time: 4 – 8 minutes (diameter of 1 cm)
- Cutting time: 20 – 45 minutes (diameter of 1 cm)
- Application temperatures: -2°C (28°F) to 30°C (86°F)
- Temperature resistance: -40°C (-40°F) to 80°C (176°F)
- Coverage: up to 45 liters depending on temperature and humidity



# AD FOAM FIREBLOCK

SLOW DOWN FLAME PROPAGATION



## 1860

- Firewall up to 235 minutes
- Very low V.O.C.: 2 g/L
- Plumbing, electrical and other applications
- Compression force: 4.35 psi (10%)
- Dry to the touch: 4 - 10 minutes (1cm diameter)
- Cutting time: 30 - 45 minutes (diameter of 1cm)
- Application temperature: 5°C (41°F) to 30°C (86°F)
- Temperature resistance: -40°C (-40°F) to 90°C (194°F)
- Coverage: up to 45 liters depending on temperature and humidity





# AD FOAM

GAPS AND CRACKS

## FILLERS AND CRACKS



### 1840

- Triple expansion
- Applicable in temperatures as low as -5°C (23°F)
- Meets CAN/ULC S102 and ASTM E84 standards
- Straw version



# ADDITIONAL PRODUCTS

Multi-purpose cleaner for Adfoam guns and surfaces



## CLEAN 500

- Removes unreacted Adfoam polyurethane foam residues
- Plug for spraying
- Adapter for Adfoam foam gun



**SEE PRODUCT VIDEO**



# ACCESSORIES

## FOAM GUNS AND NOZZLES



**ADFOAM D001**



**ADFOAM GUN II**



**ECONOMIC  
ADFOAM D008**



**ADFOAM NOZZLE II**  
Extansion for Adfoam gun **ADFOAM GUN II**



**ADFOAM GUN LONG**  
Adfoam gun with 48 inch nozzle



# ADHESIVES



## ADBOND EX 5690

- Adhesion to wood, rigid insulation panels (EPS, XPS, PIR and PU), glass, metals, masonry, etc.
- Indoor or outdoor
- Can be painted
- Very good water resistance



## ADBOND EXTREME 5692

- Hybrid construction glue
- Good adhesion to wood, rigid insulation boards, glass, metals and masonry
- Can be painted
- Water resistant





## ADFOAM BOND PLUS 1851

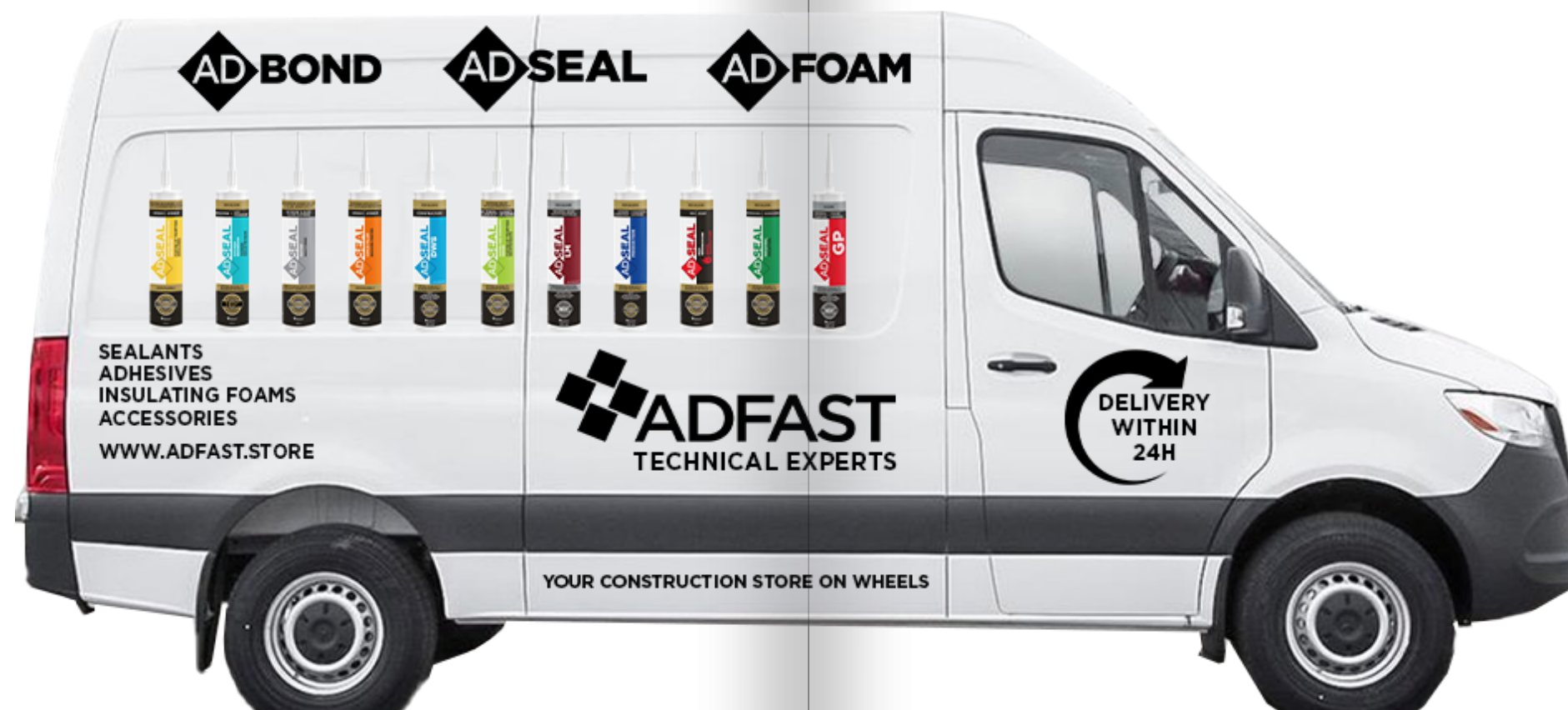
Polyurethane adhesive

- One-component, quick drying, easy to use
- Ideal for bonding subfloors, rigid insulation (EPS or XPS), drywall, bricks and concrete blocks
- Very good resistance to climatic variations
- Does not form thermal bridges, excellent thermal insulation
- Economical, practical and easy to use
- Minimal expansion during the curing process
- Once polymerized, there is no expansion or loss of product
- Does not add additional weight or load to applications
- Can be used at low temperatures (0°C / 32°F)



# DELIVERY SERVICE

# ADMOBILE





**LET'S BUILD  
TOGETHER**



 **ADFAST**